

Order example

RCI-N-□

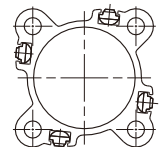
MODEL

RCI: Reed Switch
 RCI-N: Reed Switch (NPN)
 RCI-P: Reed Switch (PNP)
 RNI: NPN
 RPI: PNP

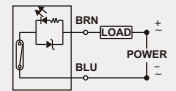
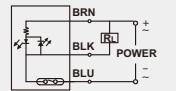
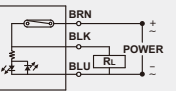
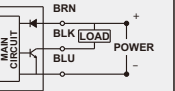
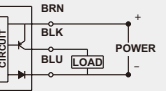
WIRE LENGTH

Blank: L=2000mm
 1M: L=1000mm
 QD: M8 3PIN connect
 EQD: M8 3PIN connect
 ※ Special order is available.

Assembling style

Cylinder type	MCQI2, MCKQI2, MCBQI2, MCJI, MCJI, MGTB, MGTU, MGTX, METB
Mounting clamp	

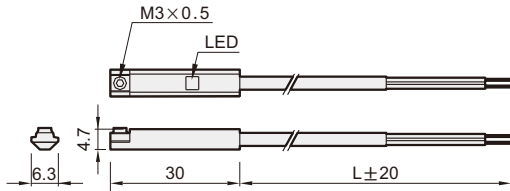
Specification

Model	RCI	RCI-N	RCI-P	RNI	RPI
Wiring	2 wire	3 wire		3 wire	
Switching logic	Normal open				
Switch type	Reed switch			NPN current sinking	PNP current sourcing
Voltage range	5~240V DC/AC	10~30V DC/AC		10~30V DC	
Current range	100mA max.	500mA max.		200mA max.	
Contact rating (※1)	10W max.			6W max.	
Current consumption	—	5 mA@24V DC max.		20 mA@24V DC max.	
Voltage drop	3.0V max.	0.1V@100mA max.		1.5V max.	
Leakage current	—	—	—	0.05mA max.	
Indicator	Red LED	Yellow LED		Red LED	Yellow LED
Cable	φ 3, 2C, PU	φ 3, 3C, PUR		φ 3, 3C, PUR	
Temperature	-10~+70°C (No freezing)				
Shock (※2)	30G			50G	
Vibration (※3)	9G				
Protection classification	ICE 60529 IP67				
Protection circuit (※4)	1			2,3,4	
Weight	23 g (2m cable)				
Symbol					

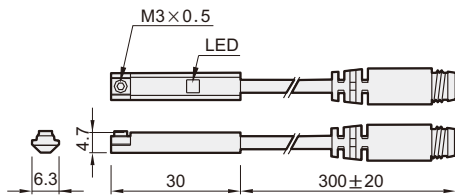
- ※1. Warning: Never exceed rating (watt=voltage× amperage). Permanent damage to sensor will occur.
- ※2. Sin wave / X.Y.Z. 3 directions / 3 times each direction / 11ms each time.
- ※3. Double amplitude 1.5mm / 10Hz~55Hz~10Hz(Sweep 1min) / X.Y.Z. 3 directions / 1 hour each time.
- ※4. 1=None / 2=Short-circuit / 3=Power source reverse polarity / 4=Surge suppression
- ※5. Caution for safety please refer to page 10-3~4.

Dimension

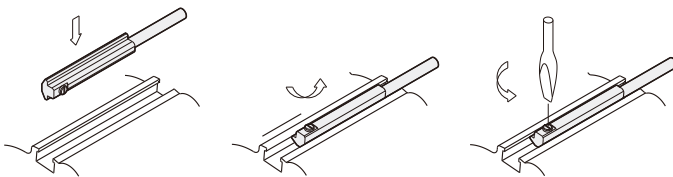
RCI-* / RNI / RPI



RCI-*-QD / RNI-QD / RPI-QD



Mounting



QD Pinout

- 2 wire QD wiring
- 2 wire EQD wiring
- 3 wire QD wiring

