



Features

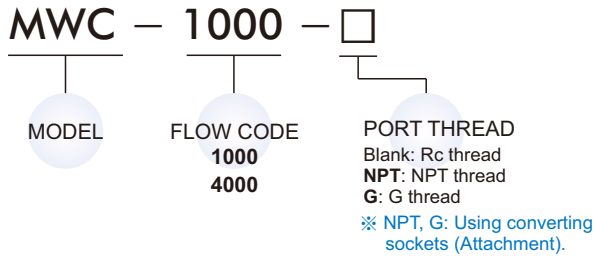
- Water removal rate remove as much as 99.99% of the water.
- Cost space saving save 80% cost.
- No power supply since no electricity is used, no wiring work is necessary. Installation is very easy.
- Compact design easily installed in wide variety of mechanical systems, due to space-saving design.

Specification

Model	MWC-1000	MWC-4000
Port size	3/8	1
External dimension (mm)	φ 85 × 382	φ 130 × 501
Max. operating pressure	1 MPa	
Max. air flow (※)	940 NL/min	4,000 NL/min
Option	Bracket	
Weight	1.6 kg	4.3 kg

※ Pressure is at 0.7 MPa.

Order example

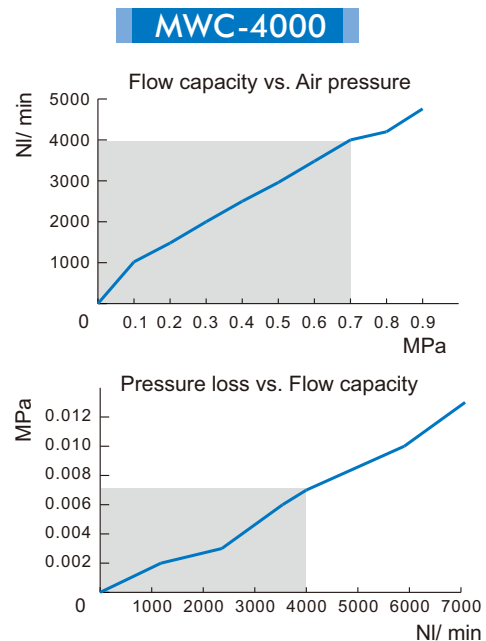
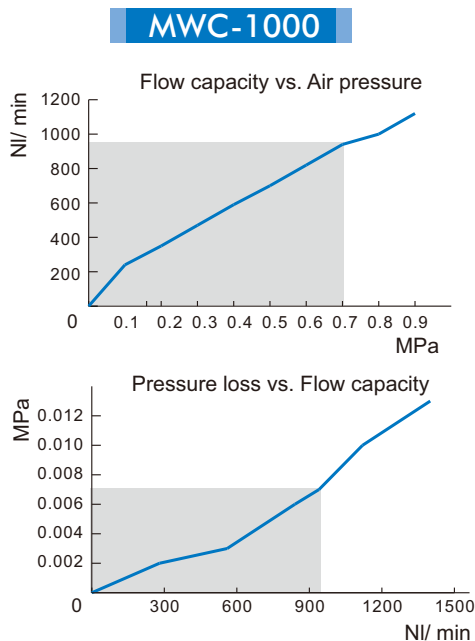


Order example of bracket






Pressure loss / flow capacity

The pressure loss is less than 1%.



※ This product must be operated within the condition designated by blue areas in the graphs.

Compact and high efficiency

-  Water drop
-  Dust
-  Oil mist

Helical air path

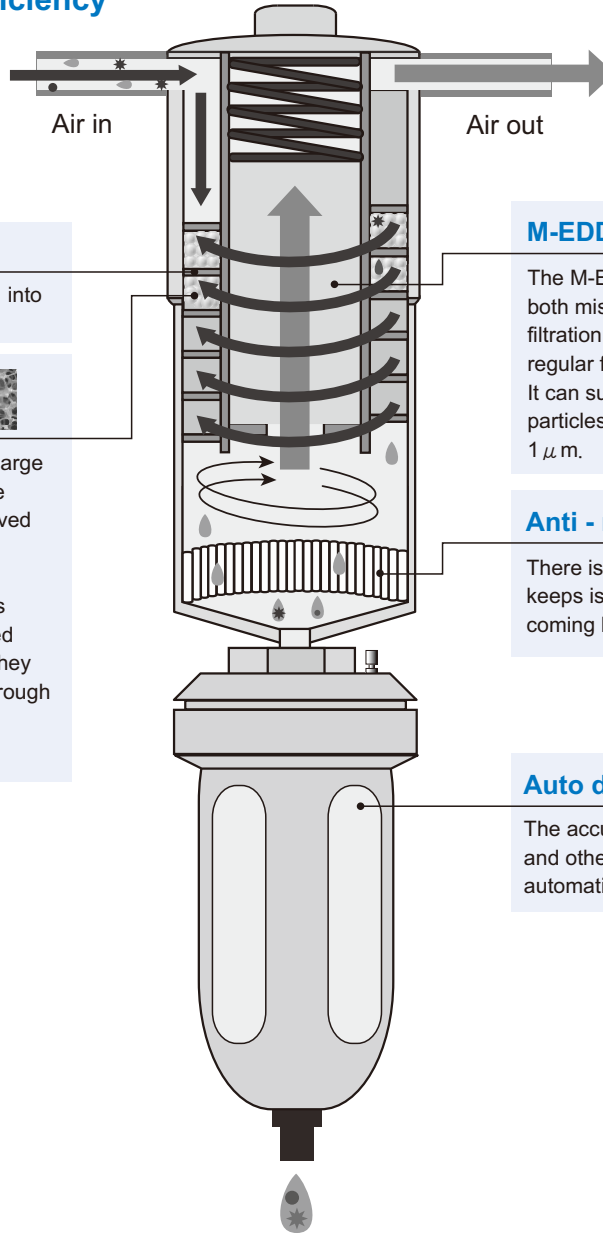
The compressed air is induced into the helical air path.

Mesh coalescer



The mesh coalescer removes large particles and lets them fall. The majority of impurities are removed at this stage.

Next, centrifugal force removes small particles that have passed through the mesh coalescer. They are dropped into the bottom through the wall of the body and finally collected in the sump.



M-EDDY filter

The M-EDDY filter which absorbs both mist and oil, has four times filtration capacity compared to the regular filters. It can supply clean air free of mist particles whose size is more than $1 \mu\text{m}$.

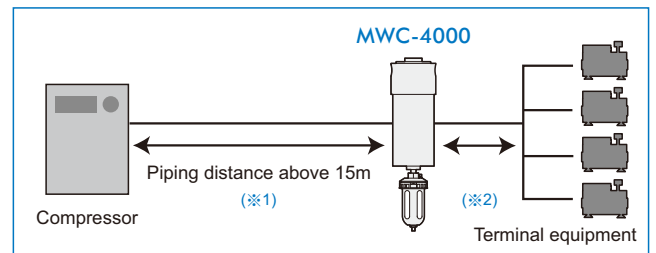
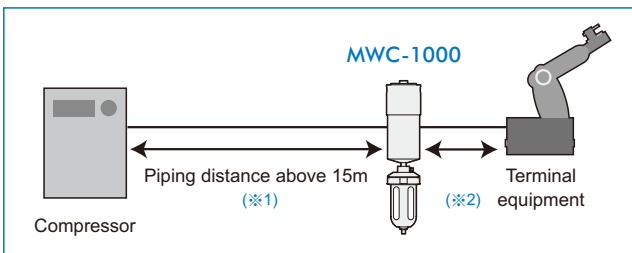
Anti - rolling up mechanism

There is a built-in mechanism that keeps isolated impurities from coming back to the air flow.

Auto drain

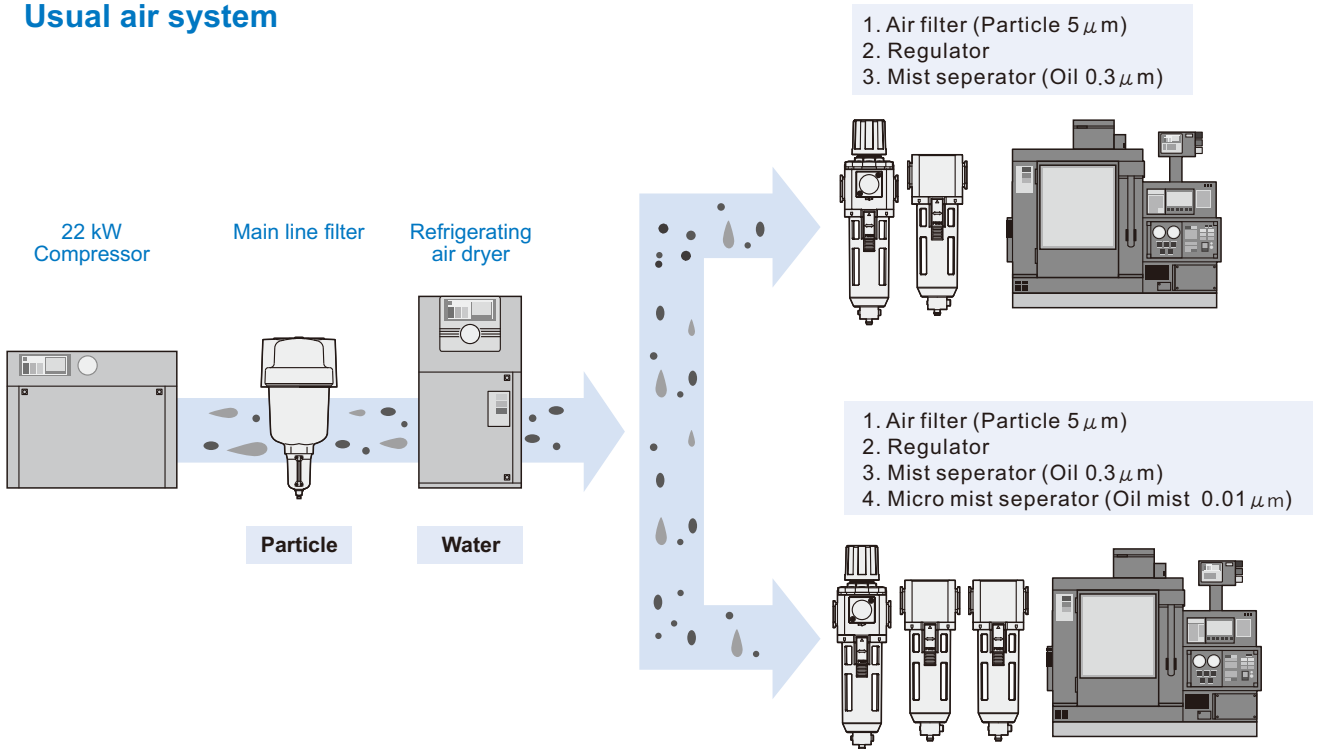
The accumulation of oil, sewage and other impurities in the bowl are automatically drain.

Application examples

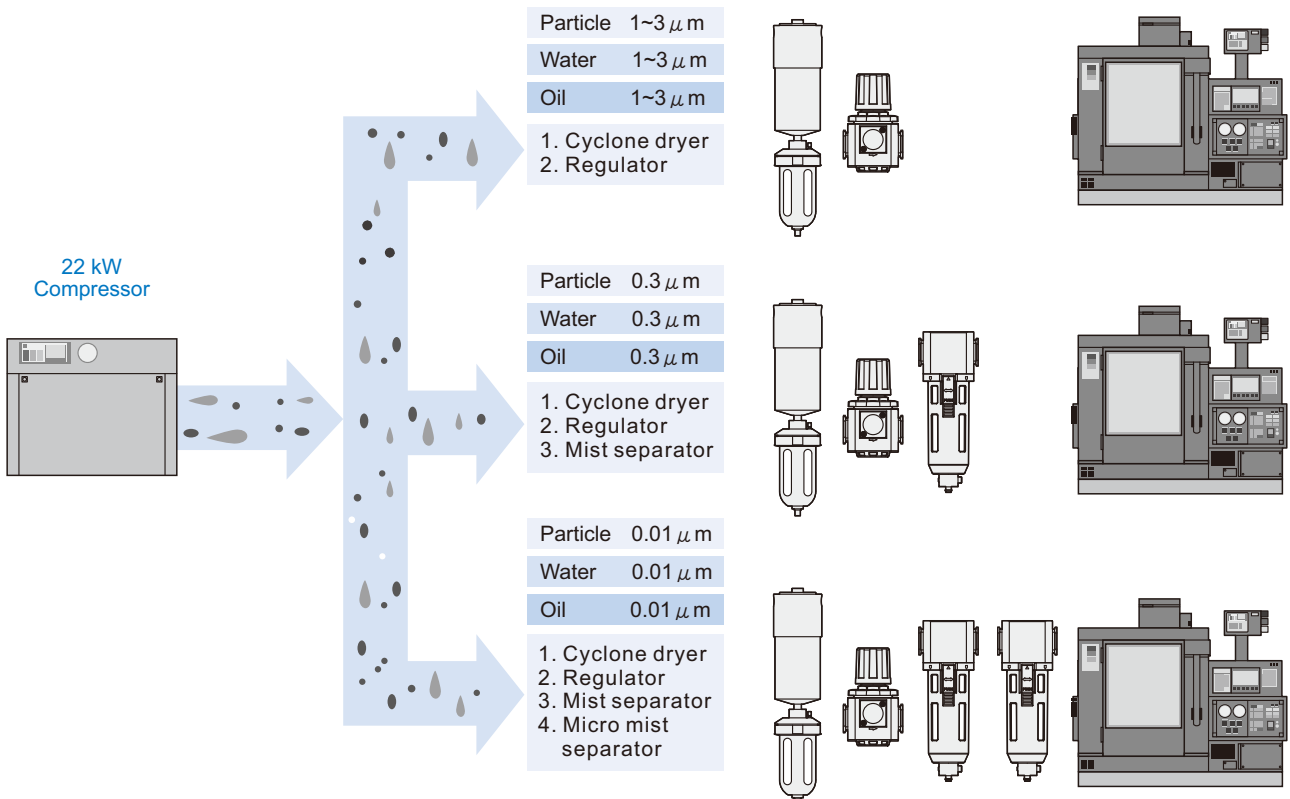


- ※1. Should be installed as far as possible from the compressor.
- ※2. Should be installed as closer as possible to the terminal equipments.

Usual air system



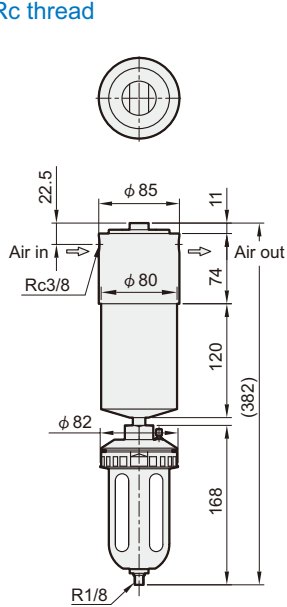
Cyclone dryer system



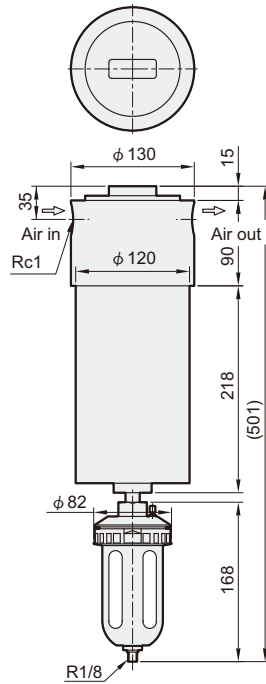
Dimensions

MWC-1000

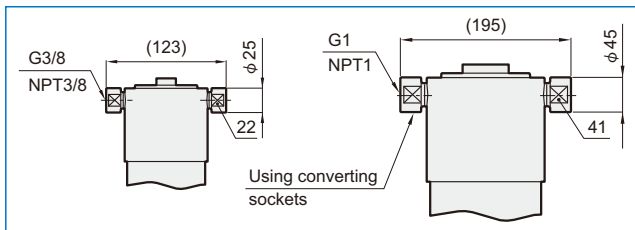
Rc thread



MWC-4000

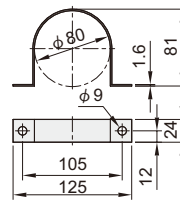


G & NPT thread

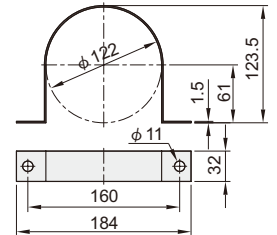


Bracket

BT-MWC-1000



BT-MWC-4000



Installation diagram

