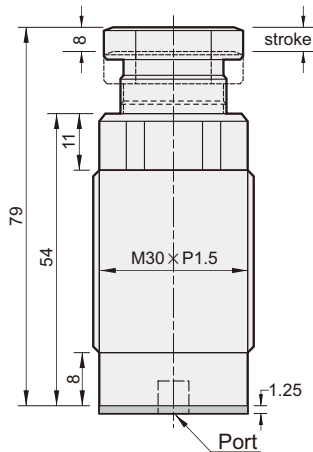




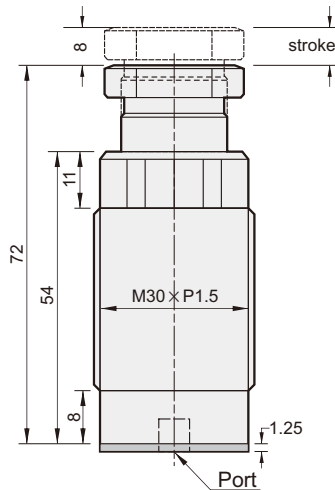
Features

- Hydraulic work support is used to both minimise vibration during machining and offer increased support.
- A type unit works on the outward stroke with a internal spring.
- B type unit works with oil pressure providing the motive force.

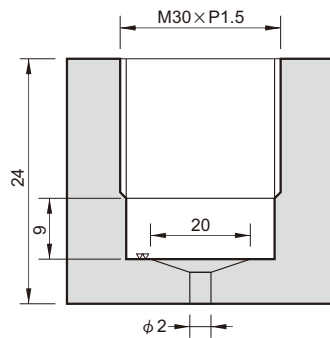
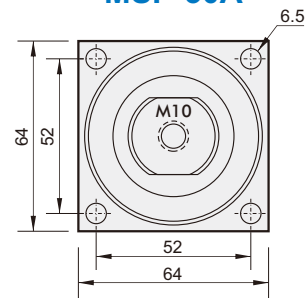
MSP-16A



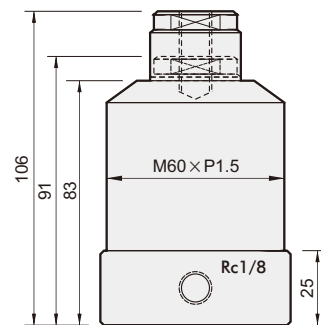
MSP-16B



MSP-30A



Mounting diagram



Item	Model	MSP-16A	MSP-16B	MSP-30A
Normal operating pressure		10~35 MPa		7.5~35 MPa
Cylinder operating		Single-acting		Single-acting
Piston-φ (mm)		16		30
Stroke (mm)		8		15
Theoretical force (20 MPa)		210 kg		750 kg