

MSC200 / 300 series

FLOW CONTROL VALVE



Specification

Model	MSC200		MSC300		
	Bore No.	6A	8A	10A	15A
Port size	Rc1/8	Rc1/4	Rc3/8	Rc1/2	
Medium	Air				
Operating pressure range	0~1 MPa				
Proof pressure	1.5 MPa				
Ambient temperature	-5~+60°C (No freezing)				
Flow (ℓ/min)	Free flow	200	200	400	430
	Controlled flow	150	100	300	400
Number of needle rotations	8		9		
Weight	72 g		130 g		

※ Supply pressure: 0.5 MPa, Temperature: 20°C

Order example

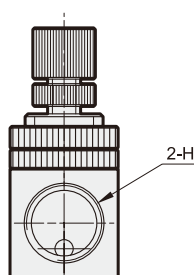
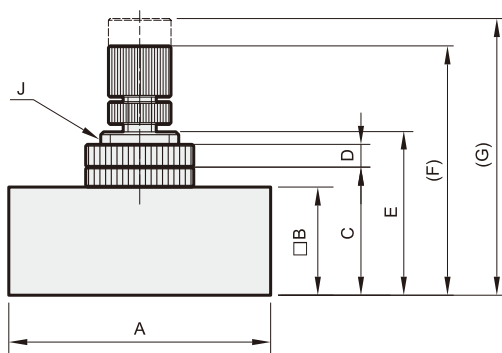
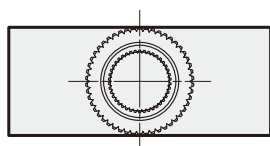
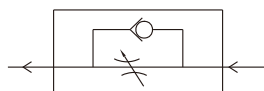
MSC200 - 6A - G

MODEL
MSC200
MSC300

BORE SIZE
6A: Rc1/8
8A: Rc1/4
10A: Rc3/8
15A: Rc1/2

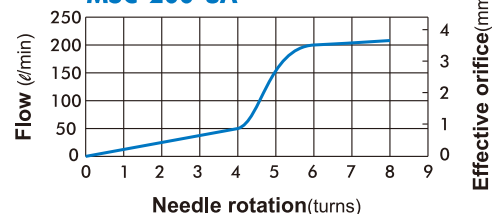
PORT
THREAD
Blank: Rc thread
G: G thread
NPT: NPT thread

Symbol

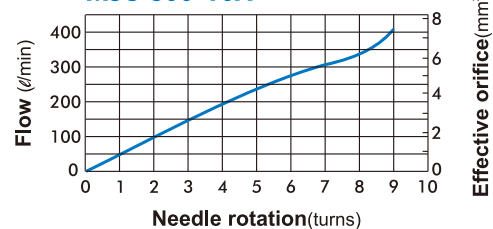


Flow feature

MSC-200-8A



MSC-300-10A



Code Model	A	B	C	D	E	F	G	H	J
MSC200	6A	46	19	22.5	4	28.7	43.8	Rc1/8	M14x1.25
	8A	46	19	22.5	4	28.7	43.8	Rc1/4	M14x1.25
MSC300	10A	56	25.4	30	4	37	53.7	Rc3/8	M18x1.0
	15A	56	25.4	30	4	37	53.7	Rc1/2	M18x1.0