

### Order example

**MGRH** – **20** – **75** – **N**

#### Model

**MGRH** : Countersink lock



#### Table width

**MGRH** (mm)

20	20
30	30
40	40

#### Table length

25~205 mm  
(next table)

#### Material

– : Standard



**B** : Black coating



**N** : Antirust



**S** : Corrosion resisting



### Table length

Table width	Table length (mm)
20	25, 35, 45, 55, 65, 75, 85
30	35, 50, 65, 80, 95, 110, 125
40	55, 80, 105, 130, 155, 180, 205

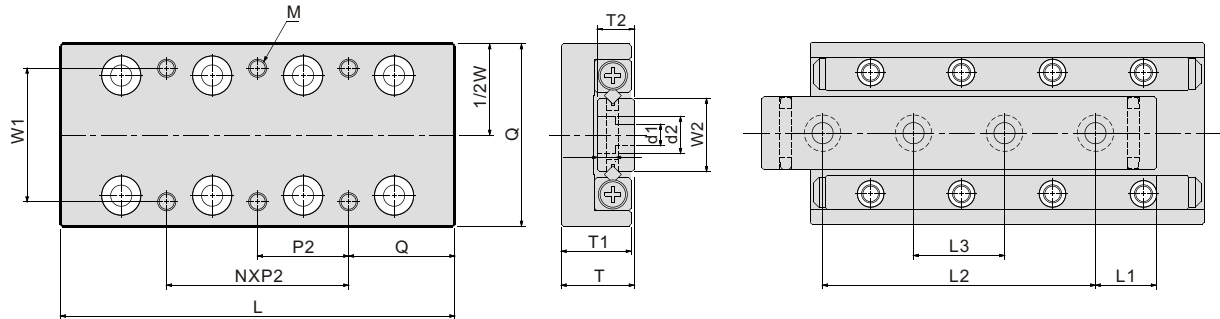
### Material

Indicate Model	Table	Rail	Retainer	Roller
<b>MGRH</b>	Aluminum alloy+ Black anodized	SUJ2	SUS304	SUJ2
<b>MGRH-N</b>	S50C+Ni	SUJ2+Ni	SUS304	SUJ2
<b>MGRH-B</b>	S50C+Phosphate	SUJ2	SUS304	SUJ2
<b>MGRH-S</b>	SUS440C+Ni	SUS304	SUS304	SUS440C

- **MGRH-N / MGRH-S** no finished to V-groove surface of the rail.
- **MGRH-S** table and rail are in one unit in this series.

- Table in **N** series, is antirust, apply to clean room environment.
- Table in **S** series, is antirust apply to corrosion-resisting, apply to clean room environment.
- Table in **B** series, is antirust, apply to clean room environment.
- All parts are cryogenic finished to increase 30% durability (refer to O-69) .

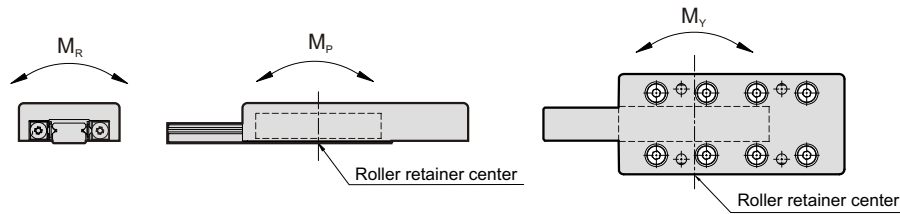
## SLIDE TABLE



(mm)

Model	Max. stroke	Roller dia.	Main dimensions					Table mounting dimensions				Base mounting dimensions									
			W	T	L	T <sub>1</sub>	T <sub>2</sub>	W <sub>2</sub>	W <sub>1</sub>	M	Q	N × P <sub>2</sub>	d <sub>1</sub>	d <sub>2</sub>	h <sub>2</sub>	L <sub>1</sub>	L <sub>2</sub>	L <sub>3</sub>			
MGRH-20-25	12	φ 1.5	20 <sup>+0.1</sup>	8 <sup>+0.1</sup>	25	7.5	4	6.6	14	M2.5 × 3.5L	3.5	1 × 18	2.5	4.1	2.2	3.5	18	—			
MGRH-20-35	18				35														5	25	
MGRH-20-45	25				45														3.5	38	25
MGRH-20-55	32				55														5	48	29
MGRH-20-65	40				65															55	31
MGRH-20-75	45				75														5	68	35
MGRH-20-85	50				85															75	40
MGRH-30-35	18	φ 2.0	30 <sup>+0.1</sup>	12 <sup>+0.1</sup>	35	11.5	6	12.0	22	M3 × 5.5L	3.5	1 × 28	3.5	6	3.3	5	25	—			
MGRH-30-50	30				50														7.5	35	
MGRH-30-65	40				65														5	55	33
MGRH-30-80	50				80															70	40
MGRH-30-95	60				95														7.5	85	45
MGRH-30-110	70				110															95	50
MGRH-30-125	80				125														110	55	
MGRH-40-55	30	φ 3.0	40 <sup>+0.1</sup>	16 <sup>+0.1</sup>	55	15.5	8	16	30	M4 × 7.5L	7.5	1 × 40	4.5	7.1	4.3	7.5	40	—			
MGRH-40-80	45				80														6	65	43
MGRH-40-105	60				105														7.5	90	55
MGRH-40-130	75				130															115	65
MGRH-40-155	90				155														7.5	140	95
MGRH-40-180	105				180															165	85
MGRH-40-205	130				205															190	90

## SLIDE TABLE



● Each of load and torque changes oppositely in stroke variation.

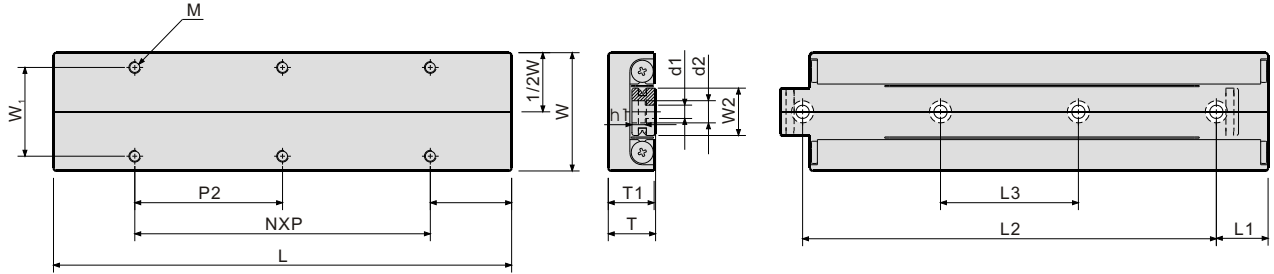
Model	Basic dynamic load rating C(N)	Basic static load rating Co(N)	Allowable load Fu(N)	Static rated moment			Weight (kg)		Table moving accuracy (μm)	
				M <sub>R</sub> (N.m)	M <sub>P</sub> (N.m)	M <sub>Y</sub> (N.m)	Standard	Antirust	Center parallelism	Side parallelism
MGRH-20-25	379	576	192	1.4	1.2	1.4	0.01	0.02	2	4
MGRH-20-35	523	865	288	2.2	2.6	3.0	0.02	0.03		5
MGRH-20-45	657	1,153	384	2.9	4.6	5.2	0.03	0.04		
MGRH-20-55	783	1,441	480	3.6	7.2	7.9	0.03	0.05		
MGRH-20-65	903	1,729	576	4.3	10.4	11.2	0.04	0.06		
MGRH-20-75	1,131	2,306	769	5.8	18.4	17.3	0.05	0.08		
MGRH-20-85	1,240	2,594	865	6.5	23.3	22.0	0.05	0.09		
MGRH-30-35	895	1,170	390	5.1	3.1	3.9	0.05	0.05	2	
MGRH-30-50	1,552	2,339	780	10.1	12.5	10.9	0.07	0.12		5
MGRH-30-65	1,849	2,924	975	12.7	19.5	17.5	0.09	0.15		
MGRH-30-80	2,164	3,509	1,170	15.2	28.1	30.4	0.11	0.19		
MGRH-30-95	2,407	4,093	1,364	17.7	38.2	40.9	0.14	0.23		
MGRH-30-110	2,930	5,263	1,754	22.8	63.2	59.6	0.16	0.26		
MGRH-30-125	3,181	5,848	1,949	25.3	78.0	74.1	0.18	0.30		
MGRH-40-55	2,901	4,567	1,522	26.5	22.8	26.6	0.15	0.24	2	
MGRH-40-80	4,338	7,611	2,537	44.1	63.4	57.1	0.21	0.35		
MGRH-40-105	5,646	10,655	3,552	61.8	124.3	115.4	0.28	0.46		
MGRH-40-130	6,268	12,178	4,059	70.6	162.4	172.5	0.35	0.57		
MGRH-40-155	7,462	15,222	5,074	88.3	253.7	266.4	0.42	0.68		
MGRH-40-180	8,603	18,266	6,089	105.9	365.3	350.1	0.49	0.80		
MGRH-40-205	9,157	19,789	6,596	114.8	428.8	445.2	0.56	0.91		

# MGRH-S Dimensions

## SLIDE TABLE



Mindman

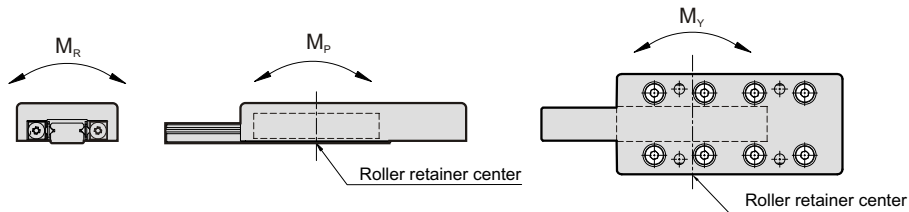


(mm)

Model	Max. stroke	Roller dia.	Main dimensions			Mounting dimensions											
			W	L	T	T <sub>1</sub>	W <sub>2</sub>	W <sub>1</sub>	M	Q	N×P	d <sub>1</sub>	d <sub>2</sub>	h <sub>1</sub>	L <sub>1</sub>	L <sub>2</sub>	L <sub>3</sub>
MGRH-20-25-S	12	φ 1.5	20 <sup>±0.1</sup>	25	8 <sup>±0.1</sup>	7.5	6.6	14	M2.5×3.5L	3.5	1×18	2.5	4.1	2.2	3.5	18	—
MGRH-20-35-S	18			35							1×28				5	25	—
MGRH-20-45-S	25			45							1×20				3.5	38	25
MGRH-20-55-S	32			55							1×30				5	48	29
MGRH-20-65-S	40			65							2×20					55	31
MGRH-20-75-S	45			75							1×30				65	35	
MGRH-20-85-S	50			85							2×30				75	40	
MGRH-30-35-S	18	φ 2.0	30 <sup>±0.1</sup>	35	12 <sup>±0.1</sup>	11.5	12.0	22	M3×5.5L	3.5	1×28	3.5	6	3.3	5	25	—
MGRH-30-50-S	30			50							1×43				7.5	35	—
MGRH-30-65-S	40			65							1×30				5	55	33
MGRH-30-80-S	50			80							1×45					70	40
MGRH-30-95-S	60			95							2×30				85	45	
MGRH-30-110-S	70			110							1×45				7.5	95	50
MGRH-30-125-S	80			125							2×45					100	55
MGRH-40-55-S	30	φ 3.0	40 <sup>±0.1</sup>	55	16 <sup>±0.1</sup>	15.5	16	30	M4×7.5L	7.5	1×40	4.5	7.5	4.5	7.5	40	—
MGRH-40-80-S	45			80							1×65				6	65	43
MGRH-40-105-S	60			105							1×50				7.5	90	55
MGRH-40-130-S	75			130							1×75					115	65
MGRH-40-155-S	90			155							2×50				140	95	
MGRH-40-180-S	105			180							1×75				165	85	
MGRH-40-205-S	130			205							2×75				190	90	



Mindman



● Each of load and torque changes oppositely in stroke variation.

Model	Basic dynamic load rating C(N)	Basic static load rating Co(N)	Allowable load Fu(N)	Static rated moment			Weight (kg)	Table moving accuracy ( $\mu\text{m}$ )	
				$M_R$ (N.m)	$M_P$ (N.m)	$M_Y$ (N.m)		Center parallelism	Side parallelism
MGRH-20-25-S	379	576	192	1.4	1.2	1.4	0.02	2	4
MGRH-20-35-S	523	865	288	2.2	2.6	3.0			
MGRH-20-45-S	657	1,153	384	2.9	4.6	5.2			
MGRH-20-55-S	783	1,441	480	3.6	7.2	7.9			
MGRH-20-65-S	903	1,729	576	4.3	10.4	11.2			
MGRH-20-75-S	1,131	2,306	769	5.8	18.4	17.3			
MGRH-20-85-S	1,240	2,594	865	6.5	23.3	22.0			
MGRH-30-35-S	895	1,170	390	5.1	3.1	3.9	0.08	2	4
MGRH-30-50-S	1,552	2,339	780	10.1	12.5	10.9			
MGRH-30-65-S	1,849	2,924	975	12.7	19.5	17.5			
MGRH-30-80-S	2,164	3,509	1,170	15.2	28.1	30.4			
MGRH-30-95-S	2,407	4,093	1,364	17.7	38.2	40.9			
MGRH-30-110-S	2,930	5,263	1,754	22.8	63.2	59.6			
MGRH-30-125-S	3,181	5,848	1,949	25.3	78.0	74.1			
MGRH-40-55-S	2,901	4,567	1,522	26.5	22.8	26.6	0.23	2	5
MGRH-40-80-S	4,338	7,611	2,537	44.1	63.4	57.1			
MGRH-40-105-S	5,646	10,655	3,552	61.8	124.3	115.4			
MGRH-40-130-S	6,268	12,178	4,059	70.6	162.4	172.5			
MGRH-40-155-S	4,762	15,222	5,074	88.3	253.7	266.4			
MGRH-40-180-S	8,603	18,266	6,089	105.9	365.3	350.1			
MGRH-40-205-S	9,157	19,789	6,596	114.8	428.8	445.2			