

Specification

※ Port thread G. NPT. are also available.

| Model | Acting | Port size | Port no. / Position | Medium | Operating pressure range | Ambient temperature | Weight |
|----------------|---------------------------------------|-----------|---------------------|--------|--------------------------|---------------------|--------|
| ACT-401-02 | Spring return type | Rc1/4 | 5/2 | Air | 0~0.9 MPa | -0~+60℃ | 380 g |
| ACT-401-03 | Spring return type | Rc3/8 | 5/2 | Air | 0~0.9 MPa | -0~+60℃ | 363 g |
| ACT-401-02-3A | Automatic return type (Closed center) | Rc1/4 | 5/3 | Air | 0~0.9 MPa | -0~+60℃ | 385 g |
| ACT-401-03-3A | Automatic return type (Closed center) | Rc3/8 | 5/3 | Air | 0~0.9 MPa | -0~+60℃ | 368 g |
| ACT-401-02-3A1 | Automatic return (Exhaust center) | Rc1/4 | 5/3 | Air | 0~0.9 MPa | -0~+60℃ | 385 g |
| ACT-401-03-3A1 | Automatic return (Exhaust center) | Rc3/8 | 5/3 | Air | 0~0.9 MPa | -0~+60℃ | 368 g |
| ACT-402-02 | Spring return type | Rc1/4 | 5/2 | Air | 0~0.9 MPa | -0~+60℃ | 357 g |
| ACT-402-03 | Spring return type | Rc 3/8 | 5/2 | Air | 0~0.9 MPa | -0~+60℃ | 340 g |
| ACT-403-02 | Spring return type | Rc1/4 | 5/2 | Air | 0~0.9 MPa | -0~+60℃ | 587 g |
| ACT-403-03 | Spring return type | Rc3/8 | 5/2 | Air | 0~0.9 MPa | -0~+60℃ | 570 g |
| ACT-405-02 | Spring return type | Rc1/4 | 5/2 | Air | 0~0.9 MPa | -0~+60℃ | 370 g |
| ACT-405-03 | Spring return type | Rc3/8 | 5/2 | Air | 0~0.9 MPa | -0~+60℃ | 353 g |
| ACT-406-02 | Pilot return type | Rc1/4 | 5/2 | Air | 0~0.9 MPa | -0~+60℃ | 352 g |
| ACT-406-03 | Pilot return type | Rc3/8 | 5/2 | Air | 0~0.9 MPa | -0~+60℃ | 334 g |
| ACT-407-02 | Pilot return type | Rc1/4 | 5/2 | Air | 0~0.9 MPa | -0~+60℃ | 628 g |
| ACT-407-03 | Pilot return type | Rc3/8 | 5/2 | Air | 0~0.9 MPa | -0~+60℃ | 606 g |
| ACT-410-02 | Hand return type | Rc1/4 | 5/2 | Air | 0~0.9 MPa | -0~+60℃ | 346 g |
| ACT-410-03 | Hand return type | Rc3/8 | 5/2 | Air | 0~0.9 MPa | -0~+60℃ | 330 g |
| ACT-410-02-3 | Hand return type (Closed center) | Rc1/4 | 5/3 | Air | 0~0.9 MPa | -0~+60℃ | 346 g |
| ACT-410-03-3 | Hand return type (Closed center) | Rc3/8 | 5/3 | Air | 0~0.9 MPa | -0~+60℃ | 330 g |
| ACT-410-02-31 | Hand return (Exhaust center) | Rc1/4 | 5/3 | Air | 0~0.9 MPa | -0~+60℃ | 346 g |
| ACT-410-03-31 | Hand return (Exhaust center) | Rc3/8 | 5/3 | Air | 0~0.9 MPa | -0~+60℃ | 330 g |
| ACT-411-02 | Hand return type | Rc1/4 | 5/2 | Air | 0~0.9 MPa | -0~+60℃ | 346 g |
| ACT-411-03 | Hand return type | Rc3/8 | 5/2 | Air | 0~0.9 MPa | -0~+60℃ | 330 g |
| ACT-411-02-3 | Hand return type | Rc1/4 | 5/3 | Air | 0~0.9 MPa | -0~+60℃ | 620 g |
| ACT-411-03-3 | Hand return type | Rc3/8 | 5/3 | Air | 0~0.9 MPa | -0~+60℃ | 603 g |
| ACT-411-02-3A | Automatic return type (Closed center) | Rc1/4 | 5/3 | Air | 0~0.9 MPa | -0~+60℃ | 658 g |
| ACT-411-03-3A | Automatic return type (Closed center) | Rc3/8 | 5/3 | Air | 0~0.9 MPa | -0~+60℃ | 640 g |
| ACT-411-02-3A1 | Automatic return (Exhaust center) | Rc1/4 | 5/3 | Air | 0~0.9 MPa | -0~+60℃ | 658 g |
| ACT-411-03-3A1 | Automatic return (Exhaust center) | Rc3/8 | 5/3 | Air | 0~0.9 MPa | -0~+60℃ | 640 g |
| ACT-412-02 | Hand return type | Rc1/4 | 5/2 | Air | 0~0.9 MPa | -0~+60℃ | 342 g |
| ACT-412-03 | Hand return type | Rc3/8 | 5/2 | Air | 0~0.9 MPa | -0~+60℃ | 325 g |
| ACT-301-02 | Spring return type | Rc1/4 | 3/2 | Air | 0~0.9 MPa | -0~+60℃ | 318 g |
| ACT-302-02 | Spring return type | Rc1/4 | 3/2 | Air | 0~0.9 MPa | -0~+60℃ | 296 g |
| ACT-303-02 | Spring return type | Rc1/4 | 3/2 | Air | 0~0.9 MPa | -0~+60℃ | 520 g |
| ACT-305-02 | Spring return type | Rc1/4 | 3/2 | Air | 0~0.9 MPa | -0~+60℃ | 305 g |
| ACT-306-02 | Pilot return type | Rc1/4 | 3/2 | Air | 0~0.9 MPa | -0~+60℃ | 288 g |
| ACT-307-02 | Pilot return type | Rc1/4 | 3/2 | Air | 0~0.9 MPa | -0~+60℃ | 564 g |
| ACT-310-02 | Hand return type | Rc1/4 | 3/2 | Air | 0~0.9 MPa | -0~+60℃ | 282 g |
| ACT-311-02 | Hand return type | Rc1/4 | 3/2 | Air | 0~0.9 MPa | -0~+60℃ | 555 g |
| ACT-312-02 | Hand return type | Rc1/4 | 3/2 | Air | 0~0.9 MPa | -0~+60℃ | 270 g |

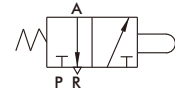
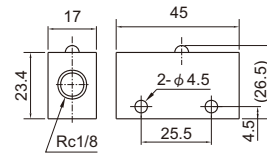
| Model | No. of port | Bore size | Medium | Operation pressure range | Ambient temperature | Weight |
|----------------|-------------|-----------|--------|--------------------------|-----------------------|-------------|
| EPA-100 / 100A | 3 | Rc1/8 | Air | 0~0.9 MPa | -5~+60℃ (No freezing) | 43 g / 68 g |
| EPA-101 / 101A | 3 | Rc1/8 | Air | 0~0.9 MPa | -5~+60℃ (No freezing) | 70 g / 68 g |
| EPA-102 | 3 | Rc1/8 | Air | 0~0.9 MPa | -5~+60℃ (No freezing) | 104 g |
| EPA-103 | 3 | Rc1/8 | Air | 0~0.9 MPa | -5~+60℃ (No freezing) | 67 g |
| EPA-104 | 3 | Rc1/8 | Air | 0~0.9 MPa | -5~+60℃ (No freezing) | 71 g |
| EPA-105 | 3 | Rc1/8 | Air | 0~0.9 MPa | -5~+60℃ (No freezing) | 68 g |
| EPA-105L | 3 | Rc1/8 | Air | 0~0.9 MPa | -5~+60℃ (No freezing) | 104 g |
| EPA-106 | 3 | Rc1/8 | Air | 0~0.9 MPa | -5~+60℃ (No freezing) | 61 g |
| EPA-107 | 3 | Rc1/8 | Air | 0~0.9 MPa | -5~+60℃ (No freezing) | 54 g |
| EPA-108* | 3 | Rc1/8 | Air | 0~0.9 MPa | -5~+60℃ (No freezing) | 100 g |
| EPA-109 | 3 | Rc1/8 | Air | 0~0.9 MPa | -5~+60℃ (No freezing) | 108 g |

EPA series

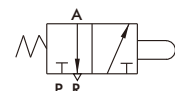
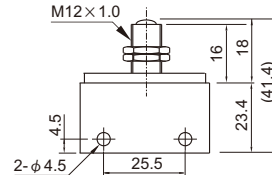
MECHANICAL VALVE



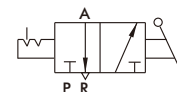
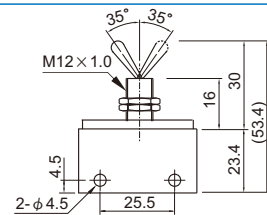
Pin plunger
EPA-100



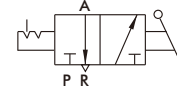
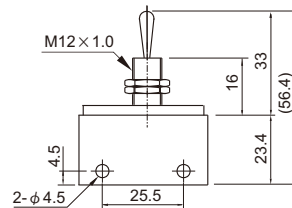
Ball actuator
EPA-100A



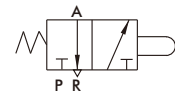
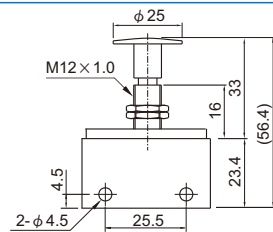
Retained toggle
EPA-101



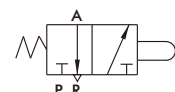
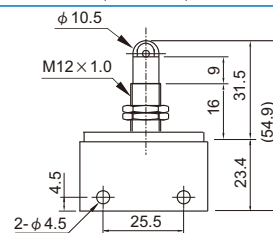
Toggle
EPA-101A



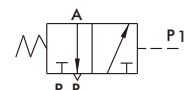
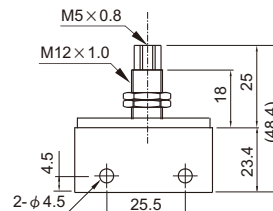
Palm button
EPA-102



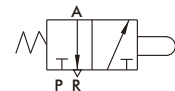
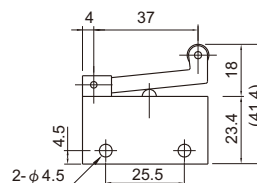
Roller plunger
EPA-103



Pilot
EPA-104



Roller lever
EPA-105

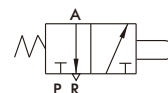
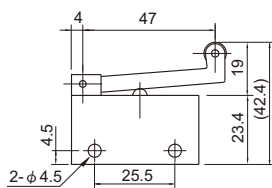


EPA series

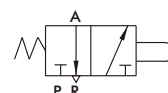
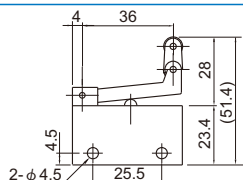
MECHANICAL VALVE



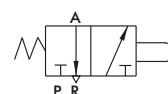
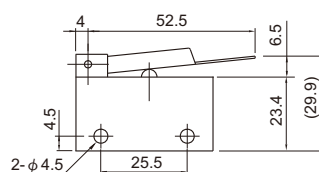
Roller lever
EPA-105L



One way lever
EPA-106

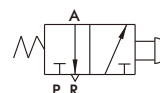
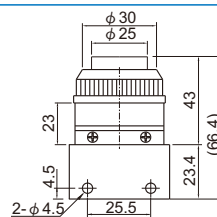


Plain lever
EPA-107



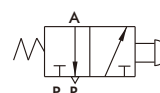
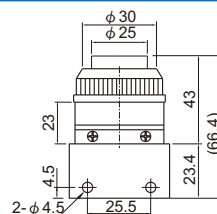
Push button
EPA-108B*

* : B=black

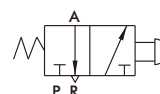
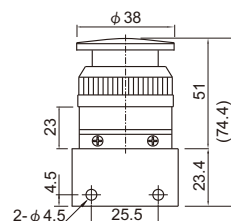


Push button
EPA-108C*

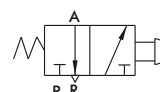
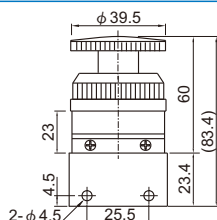
* : G=green



Palm actuator
EPA-108RA



Palm latching actuator
EPA-108RA RESET



Selector
EPA-109

