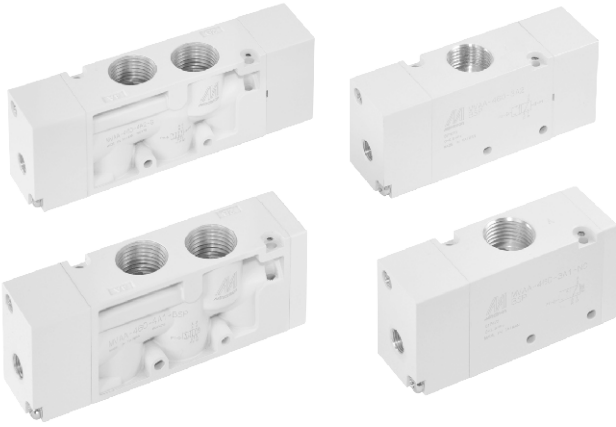


MVAA-460 系列

氣動閥



規格：

型號	3A1	3A2	4A1	4A2	4A2C.P.R
配管口徑代號	15A				
配管口徑尺寸	G1/2				
方口數	3口			5口	
使用流體	空氣				
使用壓力範圍	0~0.8 MPa				
耐壓力	1 MPa				
有效斷面積	50 mm ²				
導引壓力範圍	(0.34×P+0.1)~0.8 MPa P: 使用壓力				
周圍溫度	-5~+60℃ (不凍結)				
重量	300 g	326 g	275 g	338 g	520 g

訂購代號：

MVAA - 460 - 4A2C - NC - NPT

型號

本體寬度

NC：常閉型
NO：常開型
(僅適用3A1)

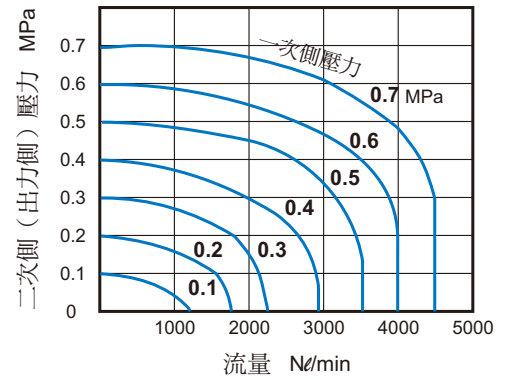
配管口螺牙
無：G牙
NPT：NPT牙

3：3方向
(3方口)
4：4方向
(5方口)

A1：單動氣壓導引
A2：複動氣壓導引

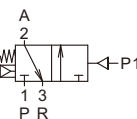
C：中間位置關閉
P：中間位置通氣
R：中間位置排氣
(僅適用4A2)

流量特性圖：

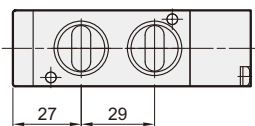
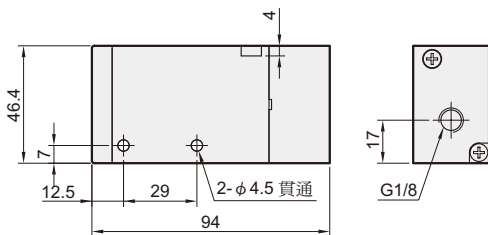
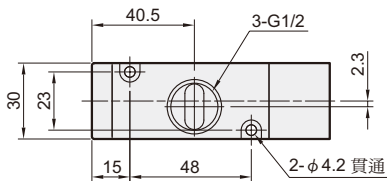
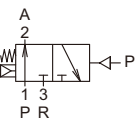


MVAA-460-3A1-NC/NO

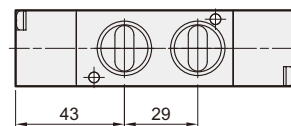
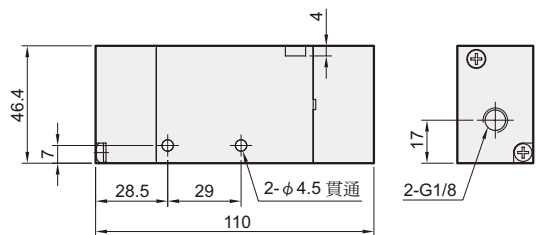
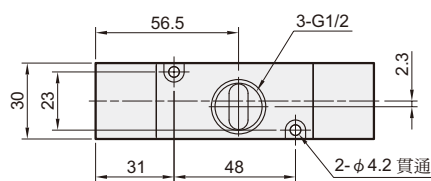
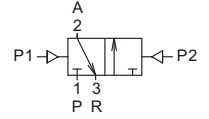
NC



NO



MVAA-460-3A2

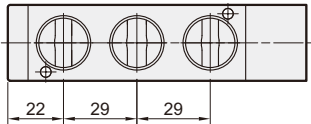
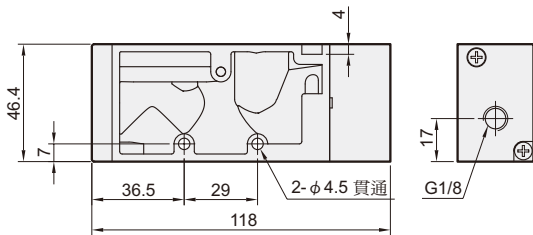
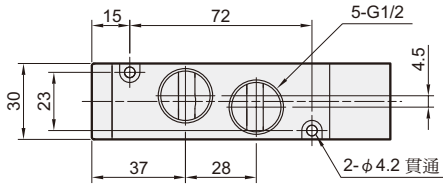
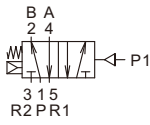


MVAA-460 外觀尺寸

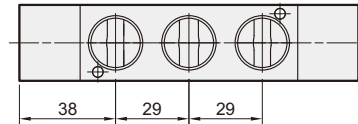
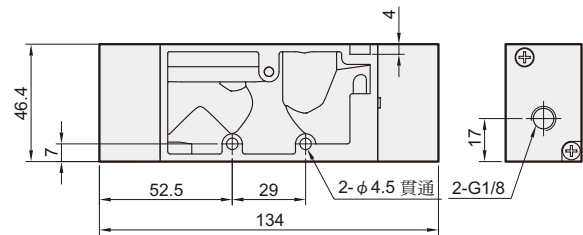
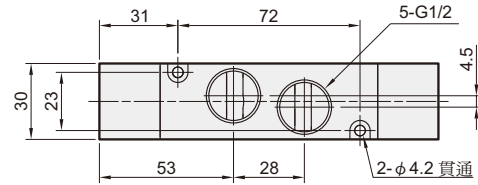
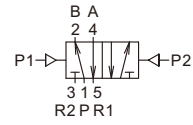
氣動閥



MVAA-460-4A1



MVAA-460-4A2



MVAA-460-4A2C.PR

MVAA-460-4A2C

MVAA-460-4A2P

MVAA-460-4A2R

