

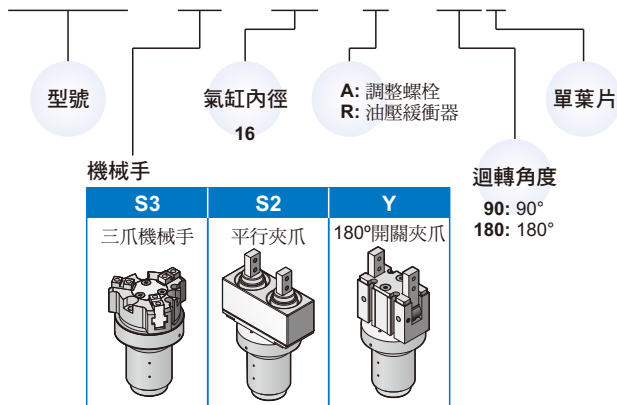
# MCRH 系列

## 迴轉機械手



### 訂購代號：

**MCRH-S3-16-A-90S**



### 規格：

型號	MCRH	
作動方式	複動型	
使用流體	空氣	
使用壓力範圍	迴轉部位	0.25 ~ 0.7 MPa
	夾爪部位	0.1 ~ 0.7 MPa
旋轉角度	90° ± 10° , 180° ± 10° (※1)	
作動公差	0.05 mm	
夾爪最大作動頻率	180 c.p.m	
周圍溫度	+5°C ~ +60°C	
動搖時間調整範圍	0.07~0.3 s/90° (at 0.5 MPa) (※2)	
容許運動能量	0.014J	
使用速度範圍	50~200 mm/s	
傳感器 (※3)	迴轉部位	RH (2線式), RHN/RHP(3線式)
	夾爪部位	RHN/RHP(3線式)
緩衝裝置	調整螺栓	橡膠緩衝
	油壓緩衝器	油壓緩衝

- ※1. 碰撞到調整螺栓, 會產生±5°變化的震動
- ※2. 超過控制速度上限使用會產生黏滯現象而無法作動, 因此請依照速度調整範圍內使用。
- ※3. 傳感器規格請參 5-12 頁。

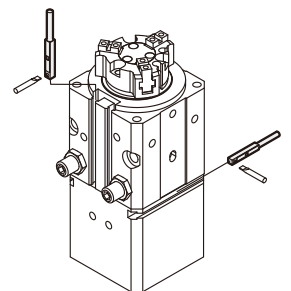
### 傳感器：

RH × 1

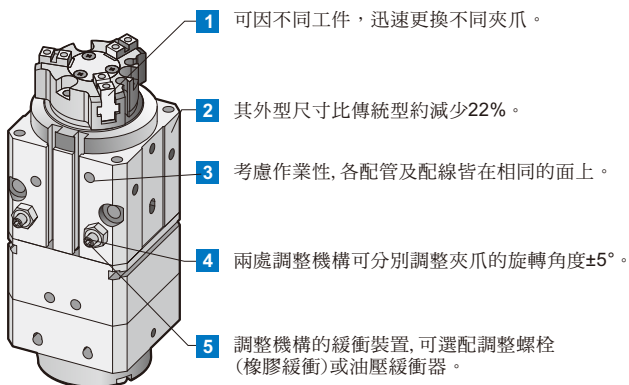
數量

出線為水平	接點型式
RH	有接點
RHN	無接點 NPN
RHP	無接點 PNP

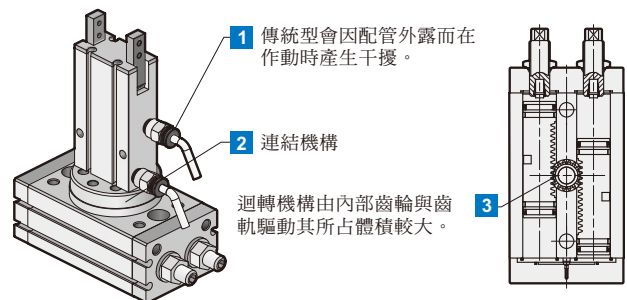
### 傳感器固定方式：



### 迴轉機械手



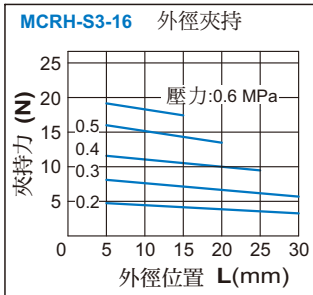
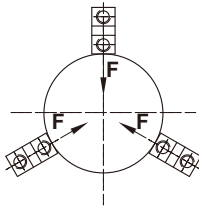
### 傳統機械手



### MCRH-S3-16

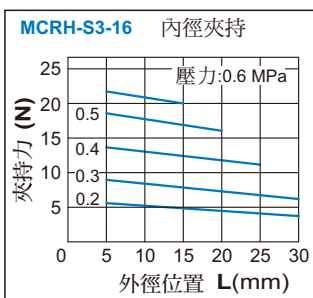
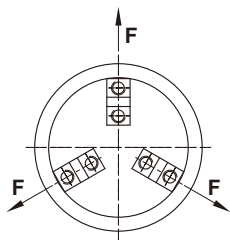
#### 外徑夾持

F: 單一夾爪的推力

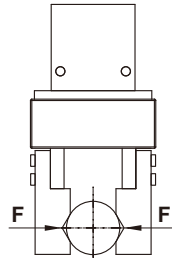


#### 內徑夾持

F: 單一夾爪的推力

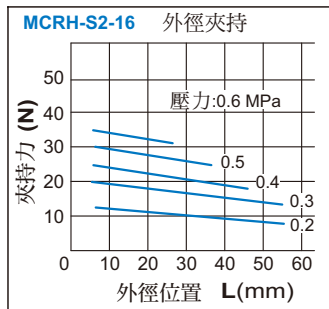
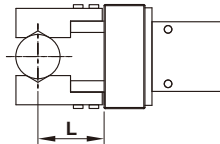


### MCRH-S2-16

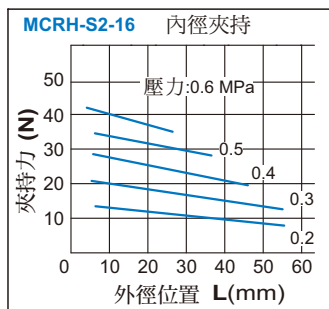
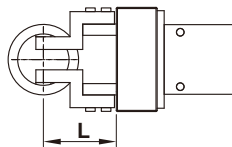


F: 單一夾爪的推力

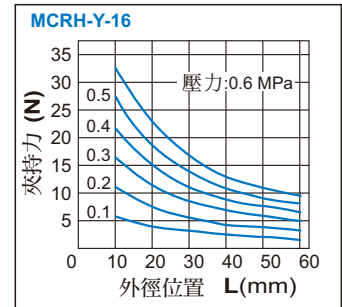
#### 外徑夾持



#### 內徑夾持

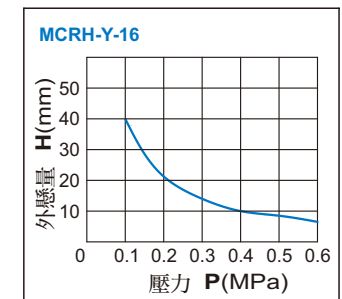
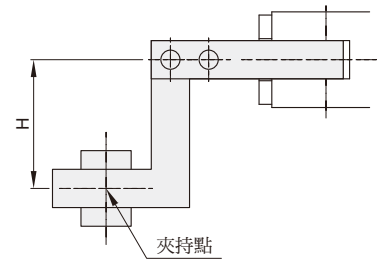


### MCRH-Y-16



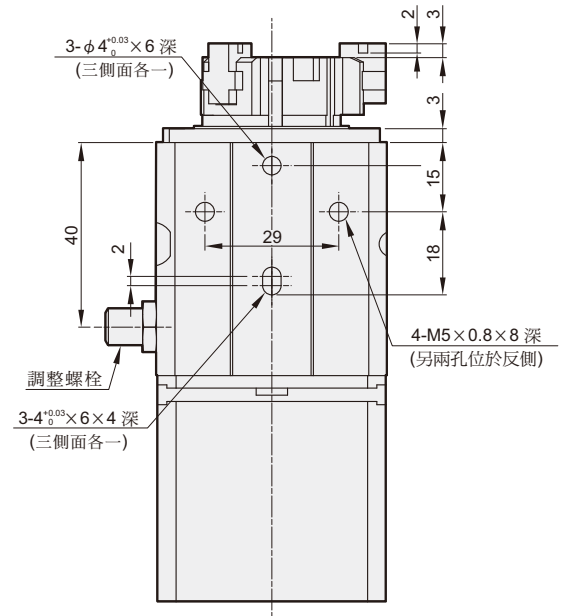
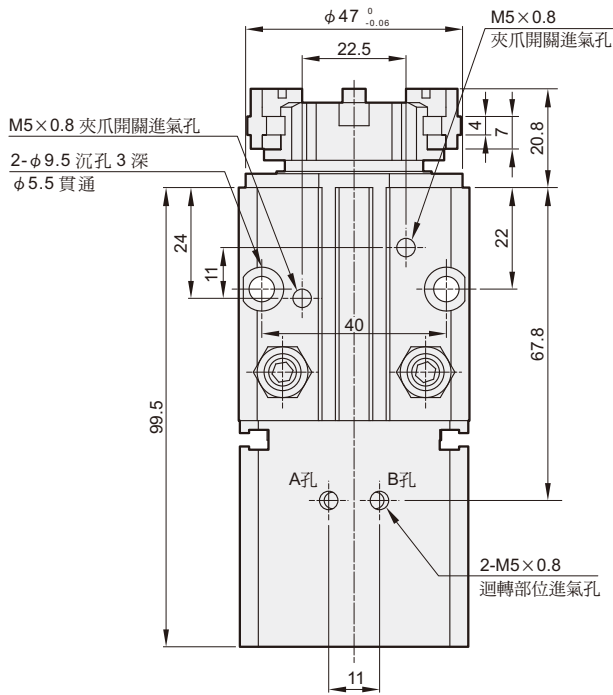
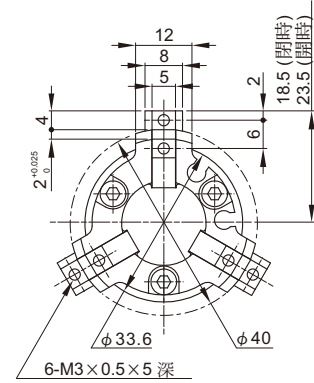
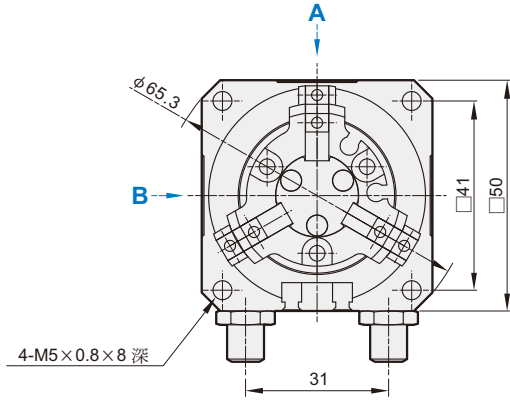
#### 夾持點的確認

工作物的夾持點為依照每個使用壓力的外懸量(H)在圖示範圍內使用,若將工作物的夾持點設於限制範圍外的話會對夾爪壽命產生影響。

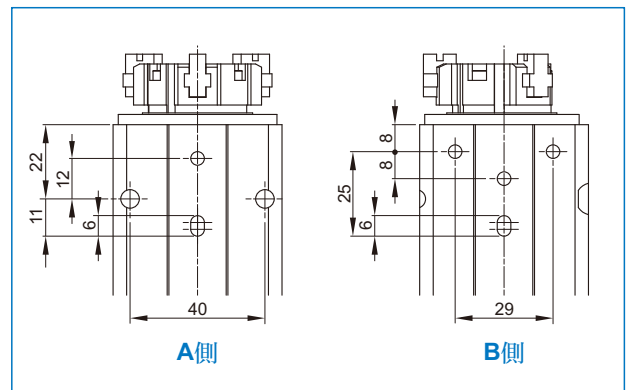
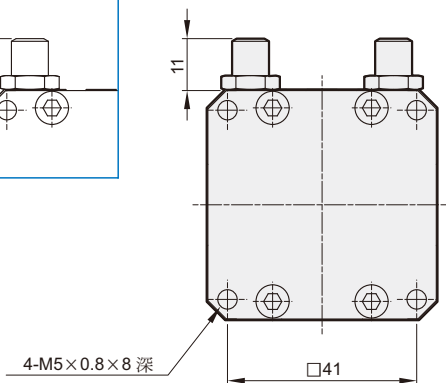
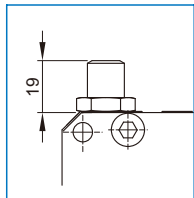


# MCRH-S3 外觀尺寸 $\phi 16$

迴轉機械手

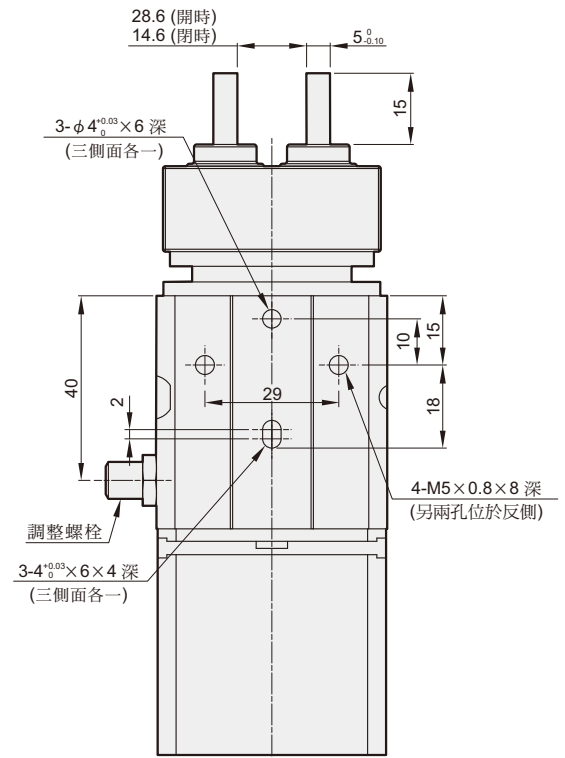
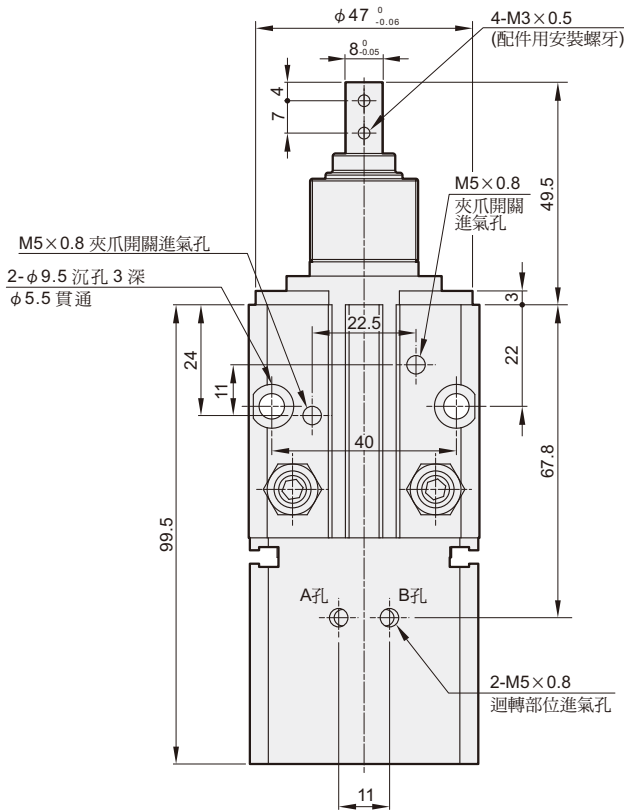
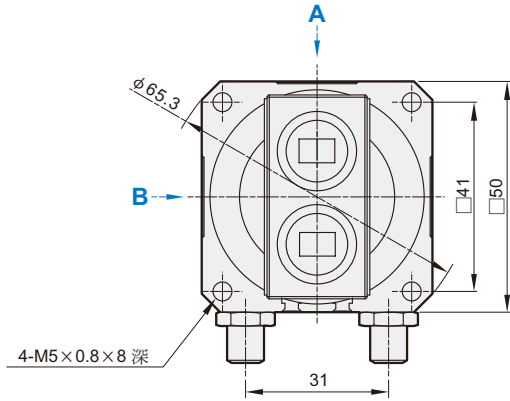


## R: 油壓緩衝器

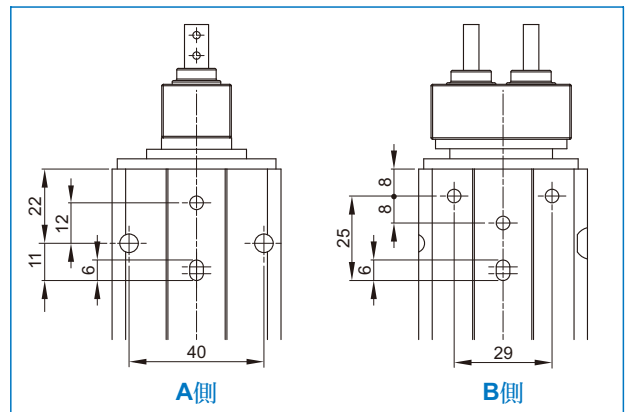
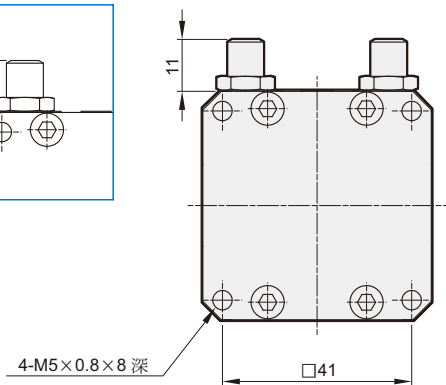
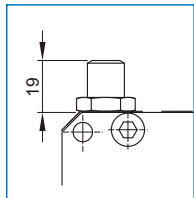


# MCRH-S2 外觀尺寸 $\phi 16$

迴轉機械手

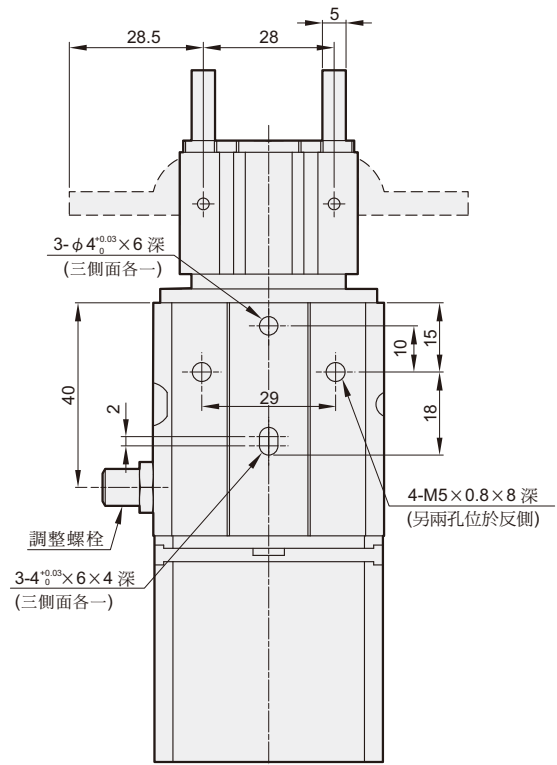
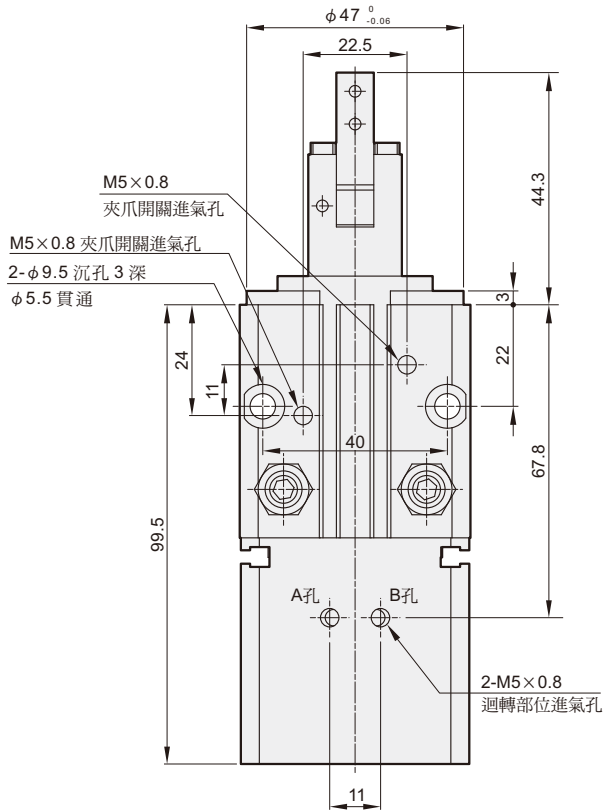
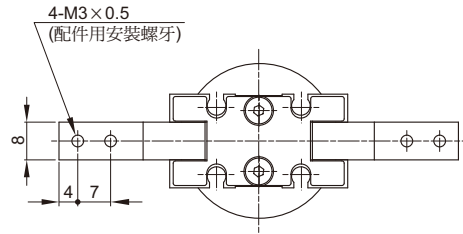
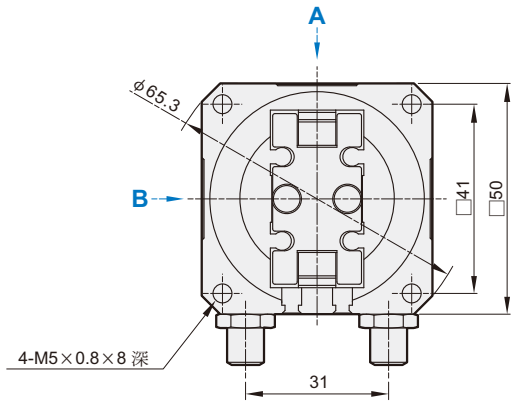


## R: 油壓緩衝器



# MCRH-Y 外觀尺寸 $\phi 16$

迴轉機械手



## R: 油壓緩衝器

