



- Start-up valve for low speed air supply to gradually raise initial pressure in an air system and for quick exhaust by cutting off air supply.
- Combination with modular type air units (F.R.L. unit).

Specification

Model	MAVS400	
Bore No.	15A	
Port size	1/2	
Medium	Air	
Operating pressure range	0.25~1 MPa	
Effective orifice	1(P)→2(A)	61mm ²
	2(A)→3(R)	76mm ²
Ambient temperature	0~+60℃	
Voltage	AC110V, 220V (50/60)Hz, DC24V	
Power consumption	AC=6/4.9VA DC=2.5W	
Available voltage range	± 10%	
Insulation class	F class	
Option	Pressure gauge (PG-40)	
Weight	800 g	

Order example

MAVS400 - 15A - 1 - □ - □ - AC110 - L - □

MODEL

BORE SIZE
15A : 1/2

BODY COLOR

- 1 : Silver (for air unit 401 series)
- 3 : Cool gray (for air unit 403 series)

C: with pressure gauge (PG-40)

B: L type bracket

VOLTAGE
AC220V(50/60)Hz
AC110V(50/60)Hz
DC24V

PORT THREAD
Blank: Rc thread
G: G thread
NPT: NPT thread

- Blank: DIN connect
- L: DIN connect with LED indicator
- E: Explosion protection (Table 1)
- W: Lead wire

Symbol

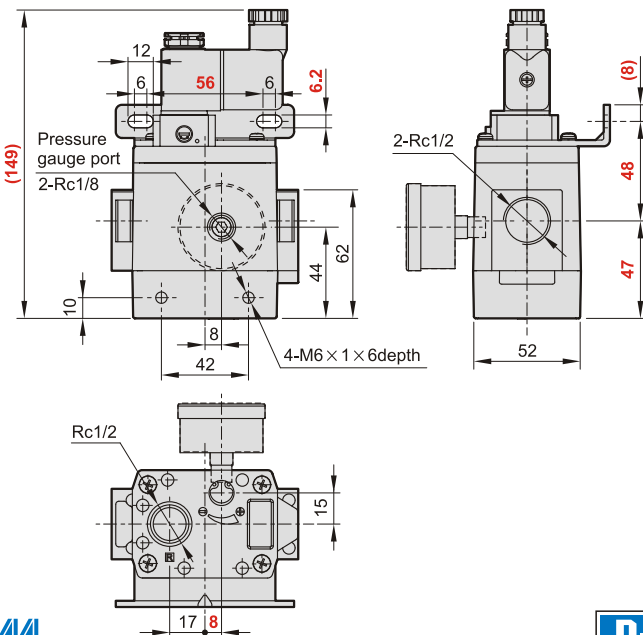
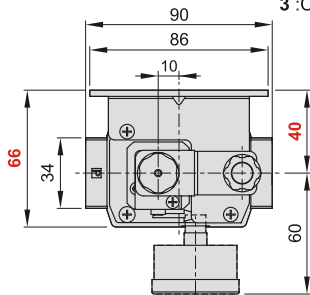
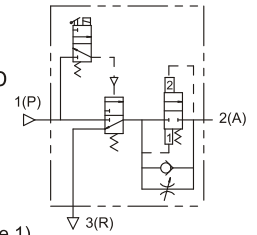


Table 1

Property for explosion-proof type

Anti-explosion class	EEx m II T4
Voltage	AC110V, 220V, (50/60)Hz, DC24V.
Power consumption	AC=4.4VA DC=5W
Available voltage range	± 10%
Insulation class	F class

Piping note

- The total effective orifice of the piping material and component on the P port side must be equal or larger than 35mm².
- When the air current is restricted or insufficient pressure, the main valve will not function / switch normally and it could cause air to leak from the R port.